



Kinetic Weapons and Non-kinetic Electromagnetic Danger Area Conventions 101

WGCDR Malcolm Tutty, MEng, FIE(Aust), FRAeS, DDSTAR-AF

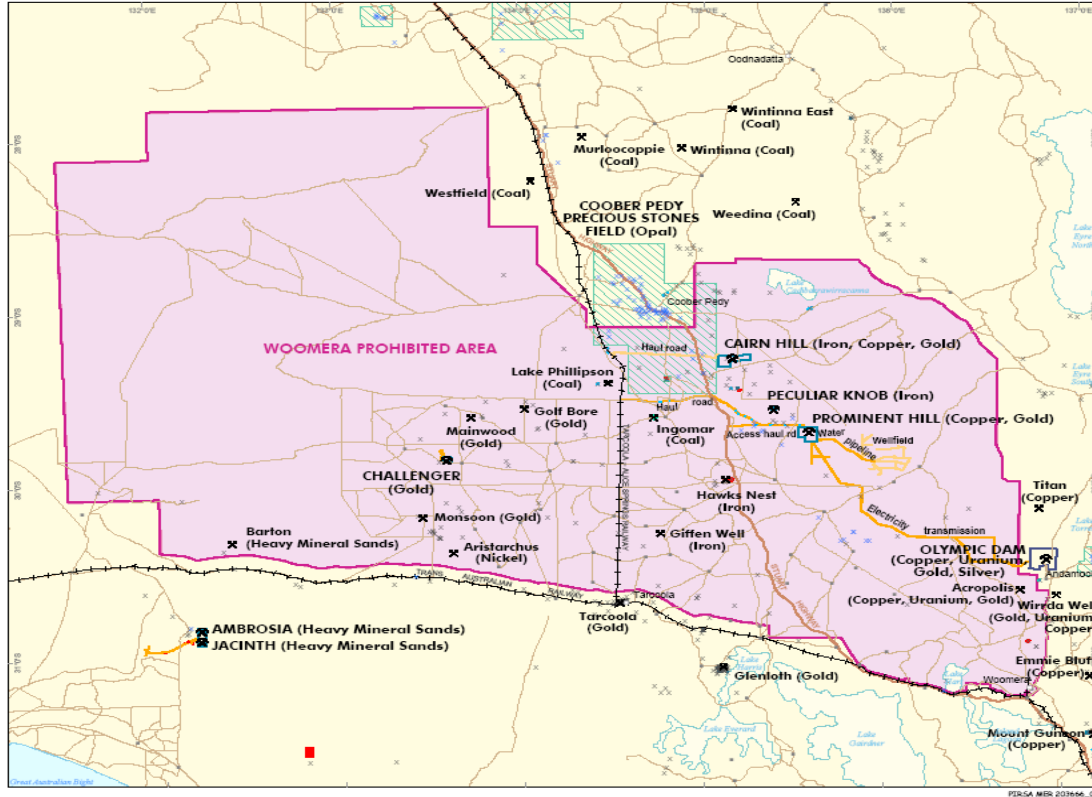
AIR FORCE



UNCLASSIFIED



Mining and the WPA



- MINE or MINERAL DEVELOPMENT
- Prospect
- Opal mine
- Occurrence
- Woomera Prohibited Area
- Precious Stones Field
- Mineral production tenements**
 - Extractive mineral lease
 - Mineral claim
 - Mineral lease
 - Miscellaneous purpose licence
 - Miscellaneous purpose licence application
 - Retention lease
 - Olympic Dam

Government of South Australia

 Primary Industries and Resources SA

 0 25 50 75 100 Kilometres

Datum: GDA 94 - Projection: Lambert Conformal Conic

Current September 2008

South Australia

WOOMERA PROHIBITED AREA

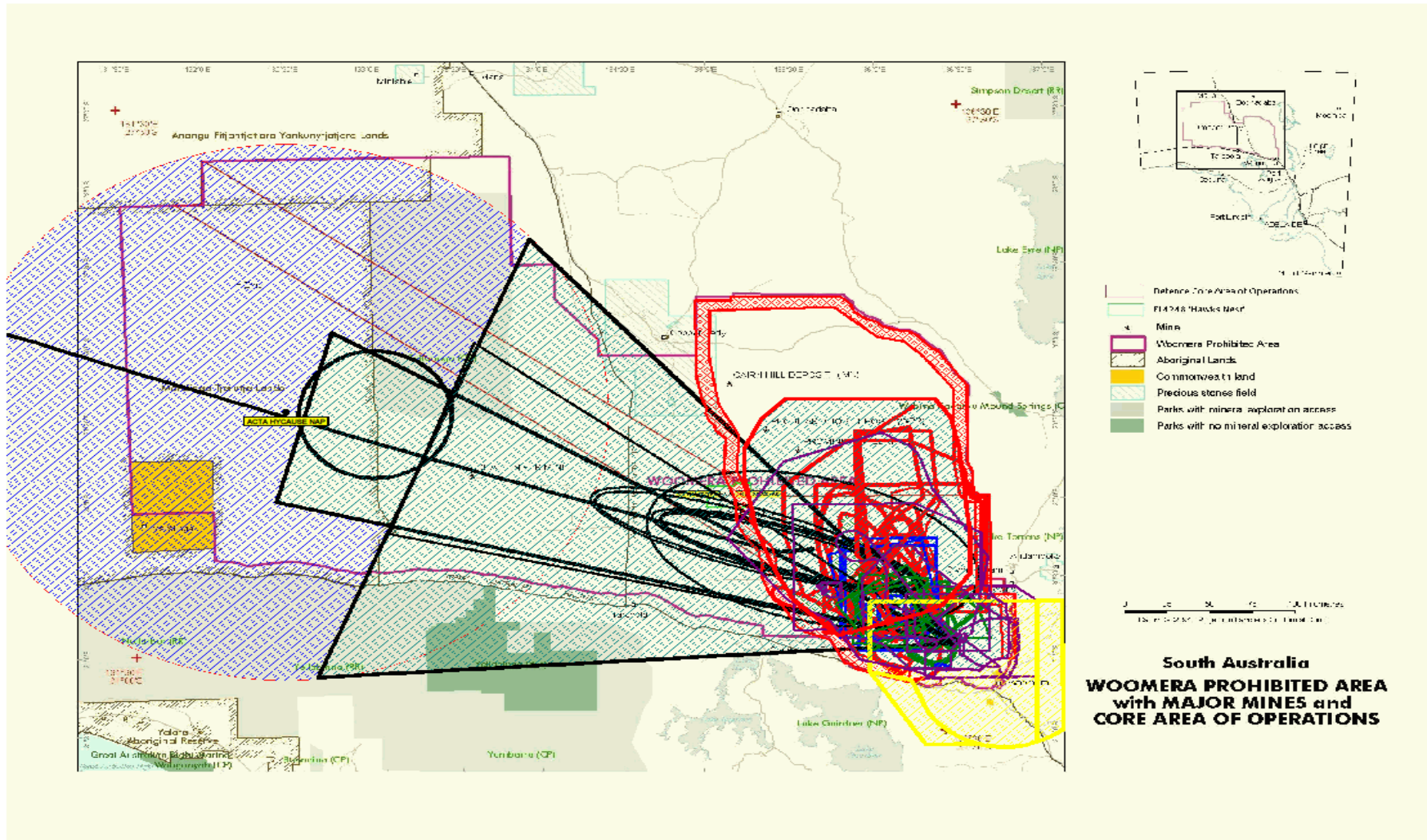
MINERAL DEVELOPMENTS,

PROSPECTS and INFRASTRUCTURE



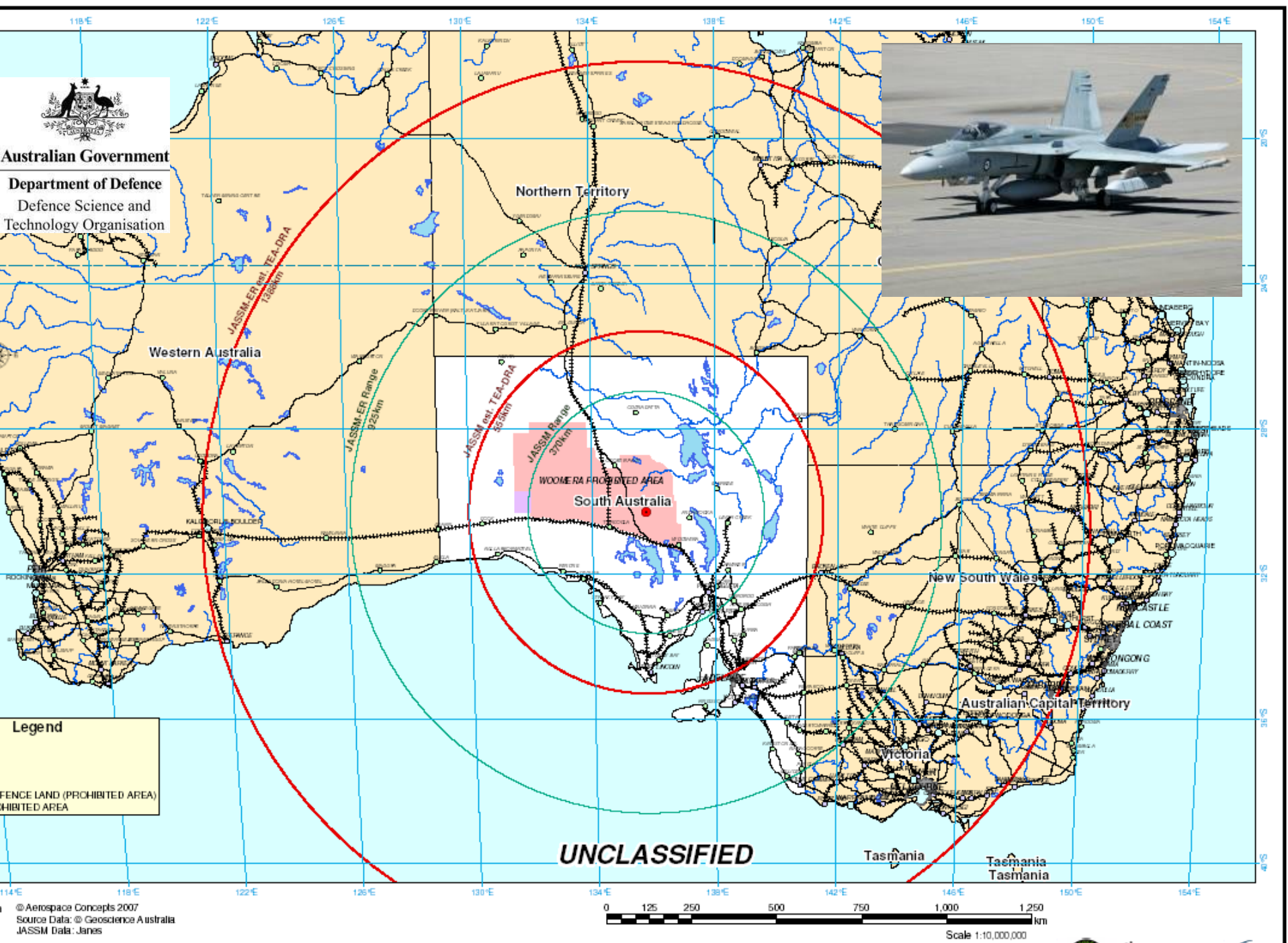


Contemporary Danger Areas



Danger Areas in the WPA: Electromagnetic / GPS Denial in Yellow

Weapons: Red - Missiles, Blue - Bombs, Purple - UAS's and Black - Space / Rocket Research)




Australian Government
Department of Defence
 Defence Science and
 Technology Organisation

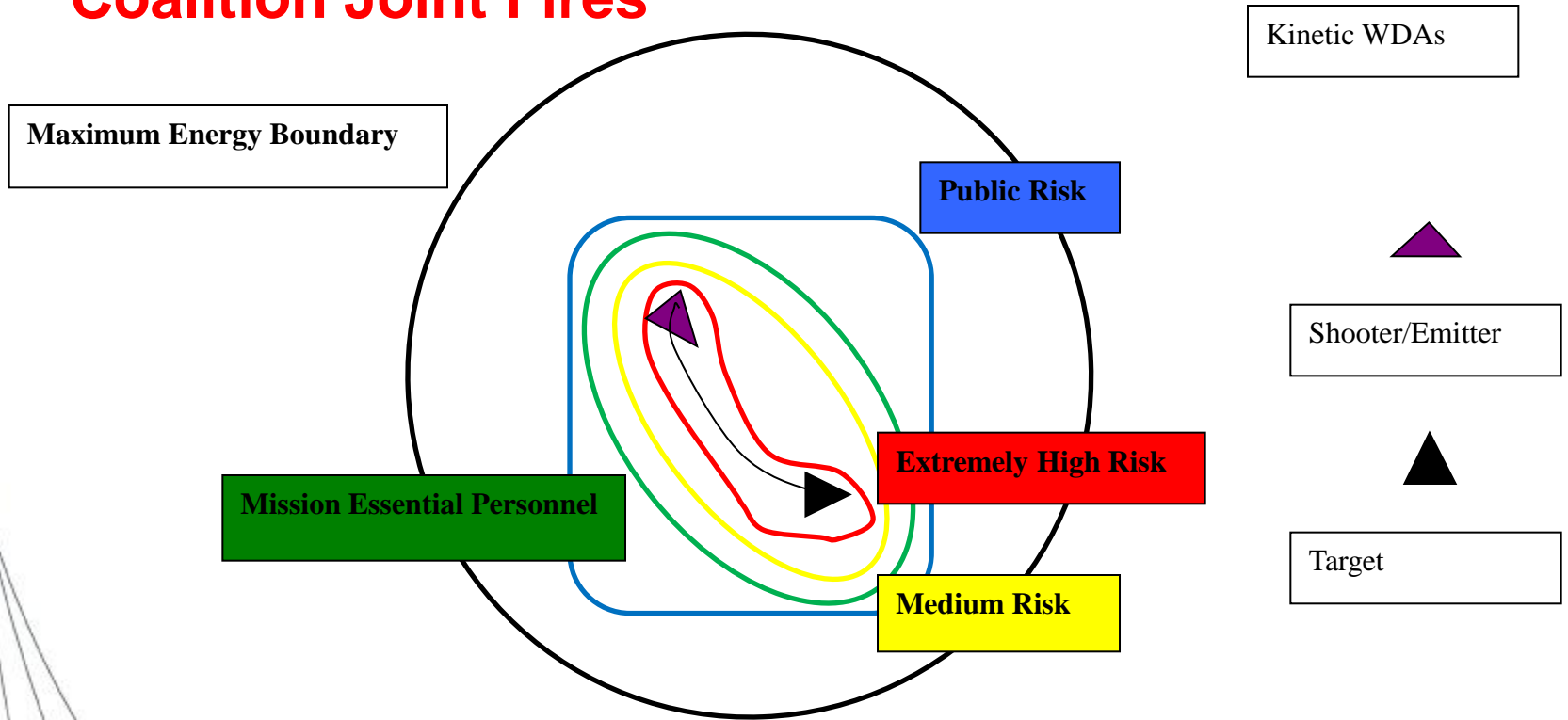
© Aerospace Concepts 2007
 Source Data: © Geoscience Australia
 JASSM Data: Janes

JASSM - Preliminary Total Energy Area (DBA)



Weapon Danger Area Conventions

US RCC STD 321:07 & Coalition Joint Fires

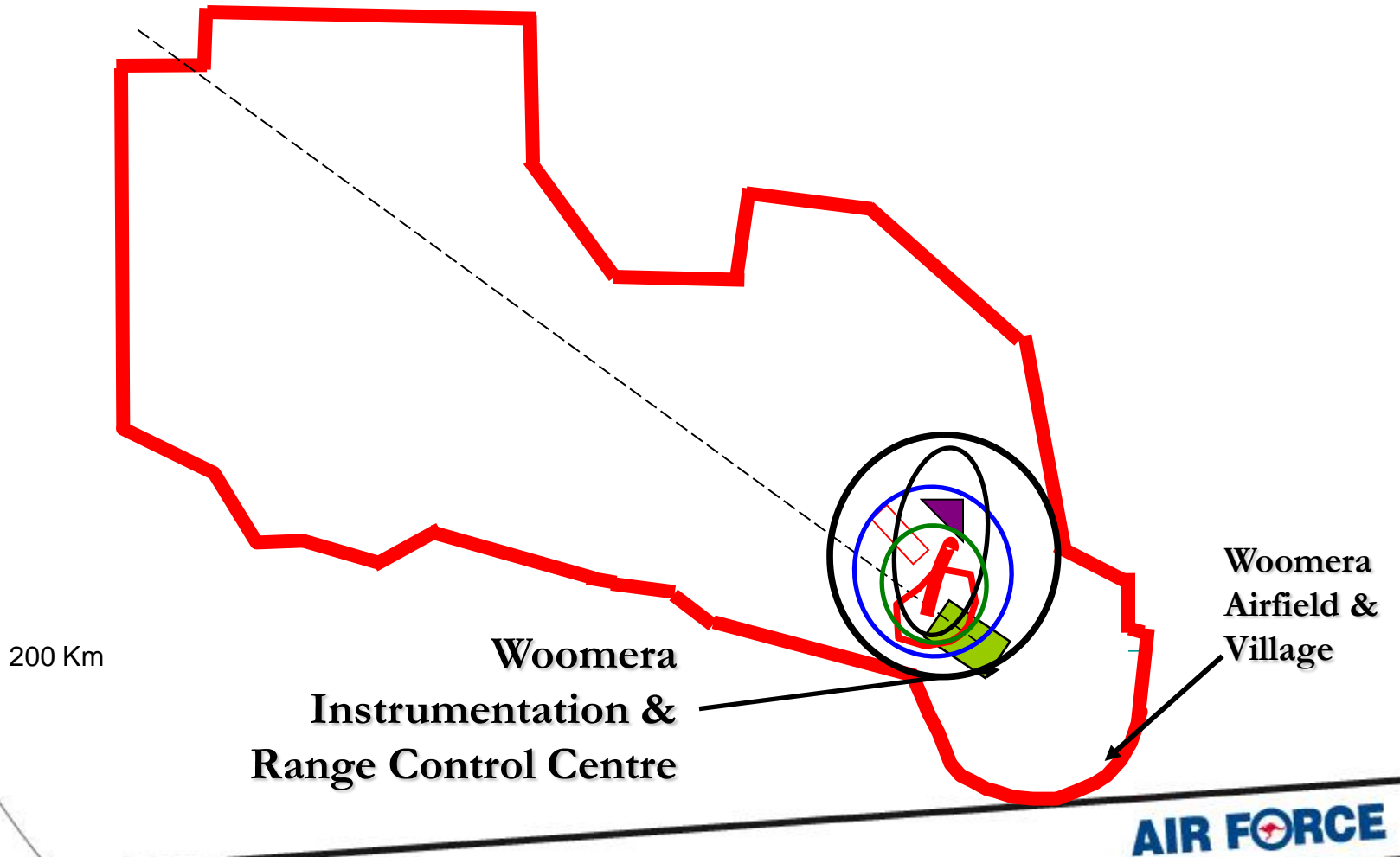


AIR FORCE





Stand-off Weapons & Operations



200 Km

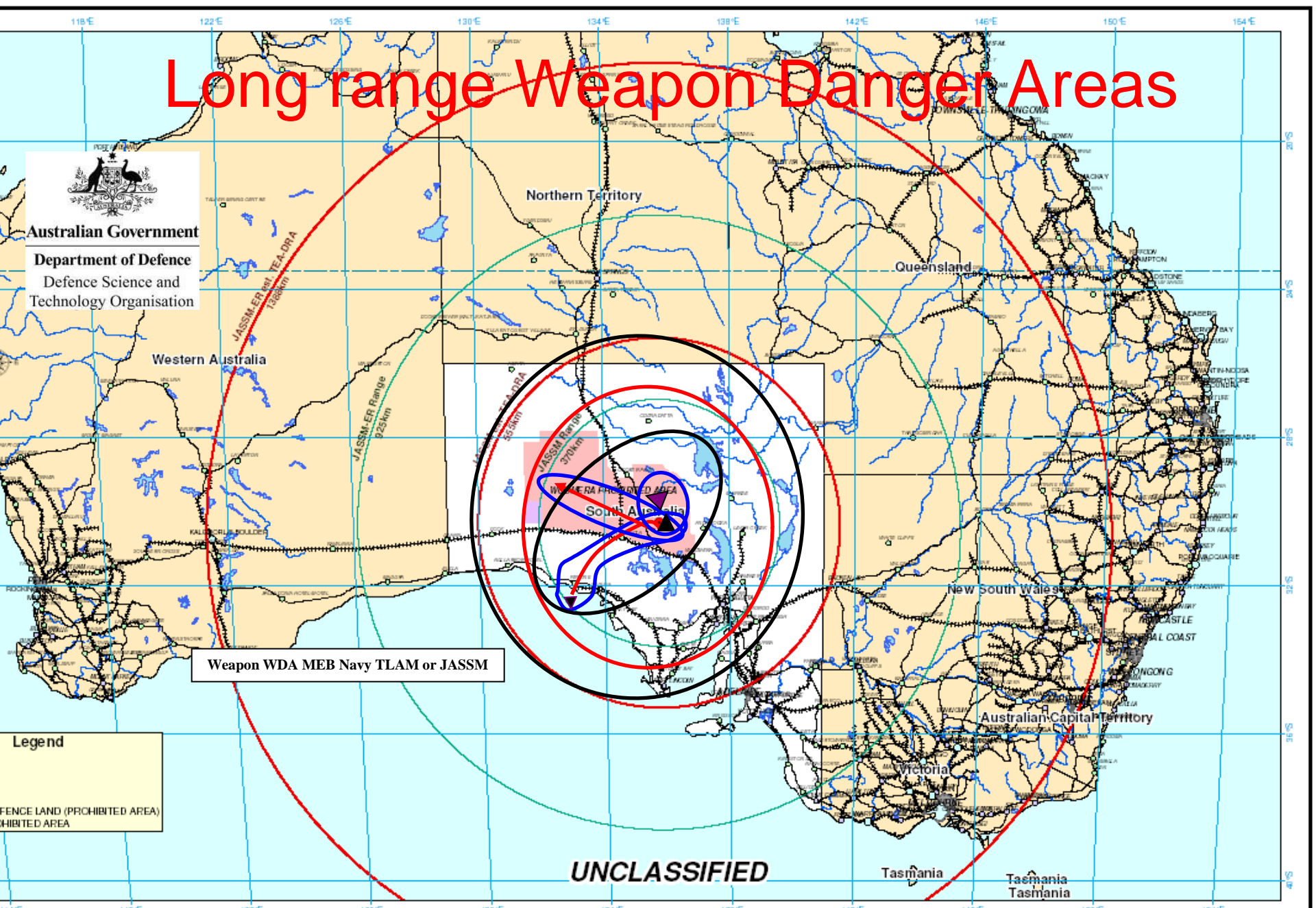
Woomera
Instrumentation &
Range Control Centre

Woomera
Airfield &
Village

AIR FORCE

Long range Weapon Danger Areas


Australian Government
Department of Defence
Defence Science and
Technology Organisation



Weapon WDA MEB Navy TLAM or JASSM

Legend
DEFENCE LAND (PROHIBITED AREA)
PROHIBITED AREA

UNCLASSIFIED



© Aerospace Concepts 2007
Source Data: © Geoscience Australia
JASSM Data: Janes

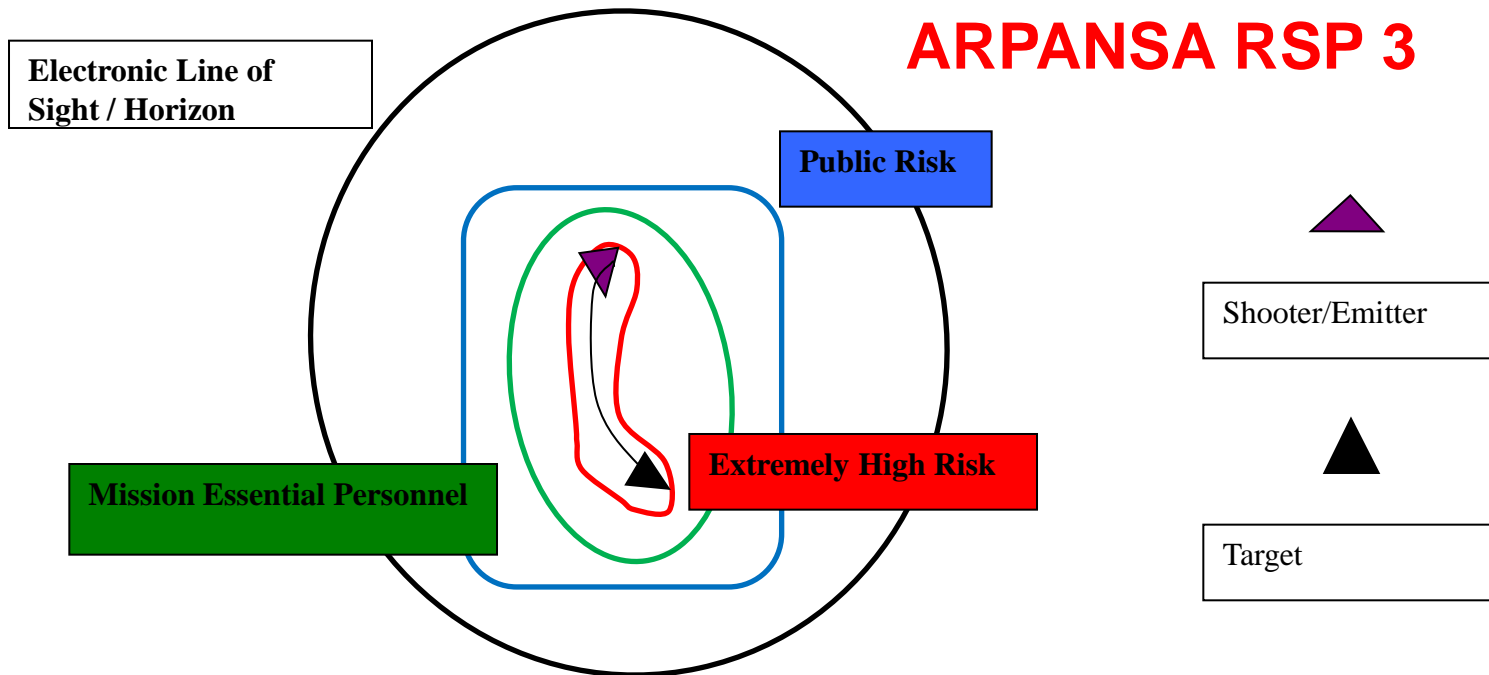
JASSM - Preliminary Total Energy Area (DBA)





Electromagnetic Danger Areas Conventions

**MIL-STD-464A and
ARPANSA RSP 3**



AIR FORCE

